

## MEMBER CONGREGATIONS



University  
Presbyterian Church



St. Austin  
Catholic Parish



First English  
Lutheran Church



UNIVERSITY  
UNITED  
METHODIST  
CHURCH



HIGHLAND PARK  
BAPTIST CHURCH



University  
Baptist Church



MICAHA 6



University Avenue  
Church of Christ



HYDE PARK  
PRESBYTERIAN CHURCH  
Live in Community With Us



All Saints'  
Episcopal Church

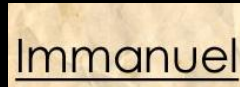


Congregational  
Church of Austin



University  
Christian Church

## SUPPORTING CONGREGATIONS



Immanuel



Central  
Christian  
Church



SW | Family Fellowship

ALL SAINT'S EPISCOPAL CHURCH*	ALLSAINTS-AUSTIN.ORG
CENTRAL CHRISTIAN CHURCH	CCCAUSTIN.ORG
CONGREGATIONAL CHURCH OF AUSTIN, UCC*	CONGREGATIONAL.FAITHWEB.COM
FIRST ENGLISH LUTHERAN CHURCH*	FELCAUSTIN.ORG
HIGHLAND PARK BAPTIST CHURCH	HPBCAUSTIN.ORG
HYDE PARK PRESBYTERIAN CHURCH	HYDEPARKAUSTIN.ORG
IMMANUEL COMMUNITY	IMMANUELAUSTIN.COM
ST. AUSTIN CATHOLIC PARISH*	STAUSTIN.ORG
SOUTHWEST FAMILY FELLOWSHIP	SOUTHWESTFAMILYFELLOWSHIP.ORG
UNIVERSITY AVENUE CHURCH OF CHRIST*	UACHURCH.ORG
UNIVERSITY BAPTIST CHURCH*	UBCAUSTIN.ORG
UNIVERSITY CHRISTIAN CHURCH*	UCC-AUSTIN.ORG
UNIVERSITY PRESBYTERIAN CHURCH*	UPCAUSTIN.ORG
UNIVERSITY UNITED METHODIST CHURCH*	UUMC.ORG

\* Denotes Founding Congregations



## 2009 ANNUAL REPORT





### FROM THE PANTRY DIRECTOR

God has orchestrated Micah 6 into existence, from its beginning as *Manna* at University Baptist Church to the larger food pantry now at University Presbyterian Church. I started volunteering about six years ago when the initial Micah 6 volunteer trainings were held. At first I volunteered once a month and then more, as my love for the program and our recipients grew. Several months ago I was asked if I would be interested in the Pantry Director position. I jumped at the opportunity. The timing was a bit off, since I was nearing retirement from my job of 20 years. Luckily that job was flexible enough to allow me to work both jobs until my retirement at the end of 2009. Today I am blessed to be the Director of this exciting mission and look forward to the many adventures ahead of us as our program grows and changes.

In Him,  
Linda Williams

### FROM THE BOARD OF DIRECTORS

It was a year of milestones. February brought the move to University Presbyterian Church. July marked five years since the nonprofit incorporation of Micah 6. August saw the creation of the Resource Area — an effort to connect pantry recipients with Austin-area support services. November and December brought showers of financial generosity, exceeding all expectations.

Yet, it was the cascade of neighbors, coming to the pantry in ever-expanding numbers with deepening burdens, that most marked the year. Jobs and homes were lost. Anxiety grew among many who serve and were served. As we recommit to our collective call, let us trust deeply in God's presence in the darkness, in the waiting. Indeed, as volunteers, recipients, congregations & supporters, may we embody that Divine presence for one another in our service.

Gretchen Olson  
President, on behalf of the Board

### PANTRY HOURS

Thursday 6:00 – 7:00 pm  
Saturday 10:30 – 11:30 am

### CONTACT US

2203 San Antonio St.  
Austin, Texas 78705

Micah6Austin.org  
512.473.0088

### EMAIL

Linda Williams, Pantry Director  
[lindahop@austin.rr.com](mailto:lindahop@austin.rr.com)

Gretchen Olson, President  
[gretchenrolson@yahoo.com](mailto:gretchenrolson@yahoo.com)

BECOME A FAN OF MICAH 6 ON



## OUR HISTORY

2001

Clergy from nine University-area churches explore ways to collaborate in their outreach ministries.

2002

- The Micah 6 Director from the National Council of Churches visits Austin to meet with the interested parties.
- Reps from the nine congregations form a planning committee.
- The Micah 6 Coalition is created, becoming the Micah 6 Council.

2003

The Council focuses on an on-going food pantry program at University Baptist Church (UBC). The Council signs an agreement with UBC to manage a centralized food pantry housed there.

2004

- Food pantry operations expand to two days per week.
- Micah 6 of Austin is incorporated as a 501c3 corporation. (July)
- The Micah 6 Messenger, a bi-monthly newsletter, goes to press.
- Recipient shopping trips total 9,600 for the year.

2005

- Recipient shopping trips total 10,714.
- M6A signs an Agreement with the Capital Area Food Bank.
- Randall's on Balcones Drive begins bi-weekly donations.
- M6A hires a part-time pantry director & *Micah6Austin.org* goes live.
- Sunshine Community Gardens begins weekly produce donations.

2006

- Recipient shopping trips total 11,720.
- The Capital Area Food Bank begins delivering M6A's weekly food order directly to the pantry doors, free of charge. Micah 6 is the first of the Food Bank's 370+ partners to receive this service.

2007

- Recipient shopping trips total 11,744.
- Hyde Park Presbyterian and Central Christian join the coalition.
- A strategic plan is adopted. The first competitive grant is received.
- Whole Foods - North begins supplying food to the pantry.

2008

- Recipient shopping trips total 13,579.
- Supporters donate \$75,000 toward renovation & relocation.

2009

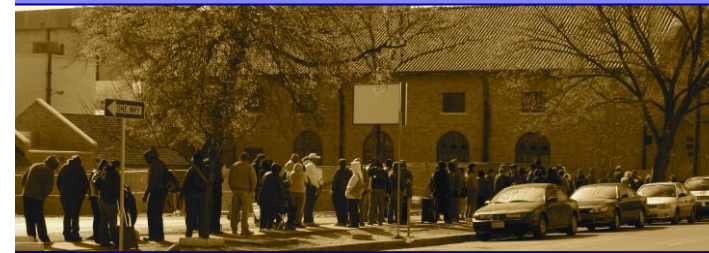
- The pantry moves into larger space at University Presbyterian.
- A Resource Area begins, linking recipients with support services.
- M6 welcomes Highland Park Baptist as a member congregation.
- Economic distress deepens. Recipient shopping trips total 20,174.

## AN ABUNDANT RESPONSE



### MICAH 6 OF AUSTIN 2009 INCOME AND EXPENSES

	<u>BUDGET</u>	<u>ACTUAL</u>	<u>VARIANCE</u>
<b><u>INCOME</u></b>			
MICAH 6 MEMBER PLEDGE AMOUNTS	\$37,000.00	\$39,404.03	\$2,404.03
M6 MEMBER PASS-THROUGH & OTHER	\$12,000.00	\$15,908.14	\$3,908.14
M6 CONTRIBUTING CHURCHES	\$3,000.00	\$3,500.00	\$500.00
INDIVIDUAL CONTRIBUTIONS & DONATIONS	\$15,000.00	\$50,760.00	\$35,760.00
SPECIAL EVENTS	\$19,972.00	\$11,313.48	-\$8,658.52
ANNUAL WORSHIP SERVICE	\$1,000.00	\$2,153.73	\$1,153.73
OTHER INCOME (E.G. RECYCLING, RANDALL'S)	\$300.00	\$921.72	\$621.72
INTEREST INCOME	\$500.00	\$365.12	-\$134.88
<b>TOTAL INCOME</b>	<b>\$88,772.00</b>	<b>\$124,326.22</b>	<b>\$35,554.22</b>
<b><u>EXPENSES</u></b>			
ADM/SALARY	\$11,588.00	\$12,907.92	\$1,319.92
ADM/IRS (EMPLOYER SS, MED., FUTA)	\$979.00	\$987.45	\$8.45
ADM/ACCOUNTING	\$1,380.00	\$1,385.00	\$5.00
<b>TOTAL ADMINISTRATIVE SUPPORT</b>	<b>\$13,947.00</b>	<b>\$15,280.37</b>	<b>\$1,333.37</b>
SUP/JANITORIAL	\$2,760.00	\$2,730.00	-\$30.00
SUP/SECURITY	\$8,540.00	\$8,960.00	\$420.00
<b>TOTAL PROGRAM SUPPORT</b>	<b>\$11,300.00</b>	<b>\$11,690.00</b>	<b>\$390.00</b>
OPR/PANTRY FOOD	\$52,000.00	\$50,123.94	-\$1,876.06
OPR/RENT	\$5,800.00	\$5,000.00	-\$800.00
OPR/INSURANCE	\$3,250.00	\$3,867.26	\$617.26
OPR/OFFICE SUPP.	\$400.00	\$491.27	\$91.27
OPR/PRINTING & REPRODUCTION	\$300.00	\$238.00	-\$62.00
OPR/PANTRY SUPP.	\$350.00	\$281.15	-\$68.85
OPR/MAINTENANCE & REPAIR	\$400.00	\$0.00	-\$400.00
OPR/MISC. (E.G. BANK & PAYPAL FEES)	\$500.00	\$944.70	\$444.70
OPR/PHONE	\$275.00	\$309.14	\$34.14
OPR/PEST CONTROL	\$250.00	\$0.00	-\$250.00
<b>TOTAL OPERATIONAL EXPENSES</b>	<b>\$63,525.00</b>	<b>\$61,255.46</b>	<b>-\$2,269.54</b>
<b>TOTAL EXPENSES</b>	<b>\$88,772.00</b>	<b>\$88,225.83</b>	<b>-\$546.17</b>
<b>NET GAIN/(LOSS)</b>		<b>\$36,100.39</b>	



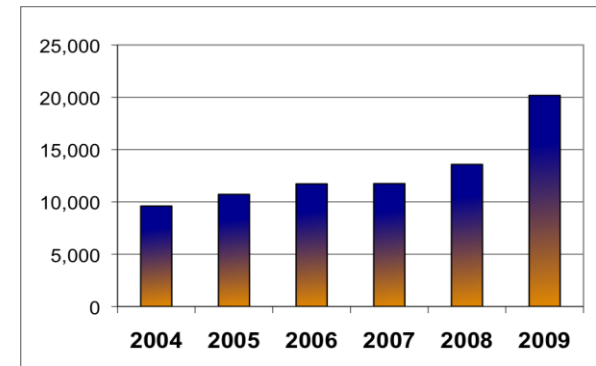
## THE GROWING NEED

Many who had not known hunger confronted it this year. In 2008, pantry volunteers welcomed about 200 first-time shoppers each month. During 2009, the average rose to 330 first-time shoppers each month.

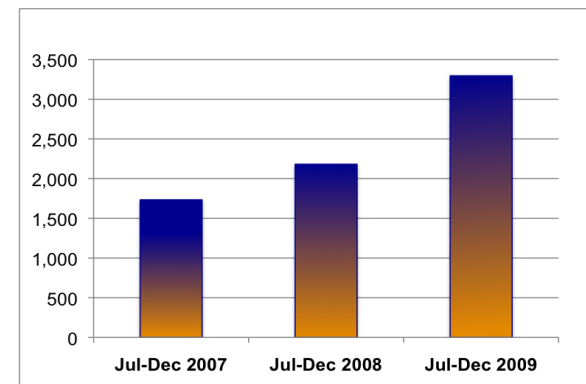
Previous pantry visitors also found they needed assistance more often. It was evident in the total number of recipient shopping trips -- a combined measure of the number of pantry recipients and how often they come to the pantry. In 2009, recipient shopping trips reached 20,174, up nearly 50% from 13,579 in 2008. Similarly, just two years ago, the pantry served about 235 shoppers each week. By the fall of 2009, the weekly average had risen to over 450.

During just the last six months of the year, the pantry served 3,296 total households, up 51% over the same period in 2008 and up a staggering 90% over that period in 2007.

### TOTAL RECIPIENT SHOPPING TRIPS



### NUMBER OF HOUSEHOLDS SERVED





**MICAH 6 MOVES.** In February, the pantry opened in its new home at University Presbyterian Church. Much gratitude goes to Mary Bowles, Charles Locklin & Diana Leal for overseeing the move and to the entire University Presbyterian family for a warm welcome and smooth transition.

**DIRECTORS CHANGED.** While Diana Leal departed the Pantry Director position this spring, we are grateful that she continues as a Micah 6 volunteer and counselor. Linda Williams took the Pantry Director reins, bringing to it six years as a pantry volunteer and 20 years of work in AISD.

**THE FOOD ORDER GROWS.** As the need for food grew, so too did the supply. Micah 6 ordered over 532,000 pounds of food from the Capital Area Food Bank (CAFB) in 2009, up substantially from 358,000 pounds in 2008. An additional 15,000 pounds were donated from other sources -- 2,100 from continuing partner, Sunshine Community Gardens, another 780 pounds from Lee Elementary School, and substantial regular donations from Randall's Grocery on Balcones Drive, Whole Foods - North and from congregations and individual donors. Special thanks also to Pat Smith, who continues her many years of placing the weekly food order to CAFB.

**THE PROGRAM EXPANDS.** Karen Ranus (St. Austin's Catholic) and Ana Salas-Porras (All Saints Episcopal) led the creation of a Resource Area. Seven volunteers staff the table on 2<sup>nd</sup> & 4<sup>th</sup> Saturdays. They have provided over 100 registration forms for Austin Energy utility assistance. They distribute greeting cards & stamps and provide information about bus passes, ESL training, Food Stamps, clothing, medical care and the most frequent request -- employment. The larger facility has also allowed for an expanded children's area and for space to distribute specialty items as they become available. Sincere thanks to the organizations that donated these items for distribution: 500 blankets (donated annually by Holy Cross Catholic Church), 30 goody bags, enough new toys for each parent to select two presents for their children (Austin Children's Shelter) and 100 filled Christmas stockings from the Holiday Stocking Project.

**THE COALITION BROADENS.** After volunteering with UBC's *God's Family Dinner* and the pantry, Highland Park Baptist Church joined the coalition as a new *Member Congregation* in December. The Micah 6 Board also voted to provide a designation for congregations interested in supporting Micah 6 without board responsibilities. Many thanks to *Supporting Congregations* Central Christian Church, Immanuel Community and Southwest Family Fellowship.



**DONATIONS INCREASE.** During difficult economic times, it was a leap of faith to increase the budget by 18% in 2009 to meet the expenses of a larger facility and to respond to growing food needs. The fundraising task force worked hard to meet the challenge. The Micah 6 community responded with overwhelming generosity. By year's end, revenues exceeded expenses by \$36,100. Continued gratitude to all the individual donors, congregations and pastoral leadership who sustain this collective ministry.

**INFORMAL COUNSELORS RESPOND.** In 2009 three Micah 6 professional social worker volunteers began offering informal "crisis counseling" to shoppers that seek help while waiting to enter the pantry. The short supportive dialogues are focused on the most immediate concern of the shopper and are guided by a respect for confidentiality and self-determination. The service has helped to ease the personal tensions and anxieties that many shoppers experience in addition to their food needs. Additionally, the Presbyterian Children's Home and Services continues to make available a licensed social worker to assist Micah 6 families with children.

**VOLUNTEERS SERVE FAITHFULLY.** Special thanks to Mary Bowles (University Avenue CC) who ended her three-year term as board member and pantry operations liaison. Her professionalism and dedication has been a profound gift to this ministry during the transitions of recent years. Thanks to incoming 2010 Board members: Craig Bell - Treasurer (University Christian), John Bell (University United Methodist), Pastor Larry Bethune (University Baptist), Harriett Choffel - Corresponding Secretary (All Saints Episcopal), Ruth Crowson (University Avenue CC), Jim Genevro - Assistant Treasurer (St. Austin's Catholic), The Reverend Cheryl Kimble (Highland Park Baptist Church), April Kwon (Hyde Park Presbyterian), Liz Nash - Secretary (Congregational), Mac McKaskle (University Baptist), Gretchen Olson - President (First English Lutheran), David Wofford - Vice President (University Presbyterian).

**And for all who respond to Micah 6:8 through this work – recipients, safety team, drivers, counselors, stocking supervisors, pantry managers, volunteers in the pantry, child care area & resource area, data keepers, webmaster & newsletter editor, congregational coordinators, donors and all others who share in this service -- we give thanks.**

